

# NORTHERN YACHT CLUB

27 Seaview Drive, North Sydney, Nova Scotia, Canada



**AUGUST 29-SEPTEMBER 2, 2022**

## **SAILING INSTRUCTIONS**

### **1. ORGANIZING AUTHORITY**

Northern Yacht Club

### **2. RULES**

2.1 The regatta will be governed by the rules as defined in the current *World Sailing Racing Rules of Sailing* and the current prescriptions of Sail Canada.

2.2 If there is a conflict between languages the English text will take precedence.

2.3 Racing will be Martin 16 single handed format (class rule 6.2)

2.4 The class rules of the Martin 16 class association will apply.

2.5 With respect to Martin 16 class rule 6.2.2, sailing companions are mandatory for Silver fleet and optional for Gold fleet.

### **3. CHANGES TO SAILING INSTRUCTIONS**

3.1 Any change to the sailing instructions will be posted before 0900 on the day it will take effect, except that any change to the schedule of races will be posted by 2000 on the day before it will take effect.

#### **4. COMMUNICATIONS WITH COMPETITORS**

4.1 Notices to competitors will be posted on the official notice board located in the Junior Sailing/SailAble Facility.

#### **5. SIGNALS MADE ASHORE**

5.1 Signals made ashore will be displayed on the flagpole on the upper deck of the clubhouse.

5.2 When flag AP is displayed ashore, '1 minute' is replaced with 'not less than 60 minutes.'

5.3 Flag D with one sound signal means "Boats have permission to leave shore." The warning signal will not be made before the scheduled start time or less than 60 minutes after D flag is displayed.

#### **6. SCHEDULE OF RACES**

Monday, August 29	Registration 1000 – 1200 hours and 1600 – 1800 hours Skipper's Meeting 1030 hours Practice race Gold Fleet 1200 hours Practice Race Silver Fleet 1430 hours
Tuesday, August 30	Gold Fleet warning signal 1030 hours Silver Fleet warning signal 1430 hours
Wednesday, August 31	Silver Fleet warning signal 1030 hours Gold Fleet warning signal 1430 hours
Thursday, September 1	Gold Fleet warning signal 1030 hours Silver Fleet warning signal 1430 hours
Friday, September 2	Silver Fleet warning signal 1000 hours Gold Fleet warning signal 1400 hours No racing begins after 1530 hours

#### **7. MEASUREMENT AND BOAT INSPECTION**

7.1 Martin 16 sailboats will not be measured prior to racing.

7.2 Martin 16 sailboats will be inspected to identify the general condition of the hull, foils, and spars prior to launch. Inspection may include pictures taken by the Organizing Authority. Before launching, boat owners or their representative shall sign an inspection sheet accepting the inspection of the condition of the boat.

7.3 All boats will be inspected to confirm they have a tow line (minimum 5 meters in length and 5mm in diameter) and an installed functioning manual bilge pump.

## **8. BOATS AND EQUIPMENT**

8.1 Boats and equipment must comply with the class rules of the Martin 16 class.

8.2 Private owners of Martin 16's are encouraged to make their boats available for charter in the fleet they are not competing in.

8.3 Club or Disabled Sailing Association (DSA) owned Martin 16's may enter one sailor in Gold Fleet and one sailor in Silver Fleet for their first boat. For additional boats, clubs or DSAs may enter one sailor in either the Gold Fleet or the Silver Fleet and will make the boat available to a sailor requiring a loaner boat in the other fleet.

8.4 Sailors requiring loaner boats must indicate such on their entry form and should complete and submit their entry by July 31, 2022. Requests for loaner boats after July 31, 2022, may not be accommodated.

8.5 Club or DSA owned boats not chartered by August 1, 2022, will be first made available to sailors from the organization supplying the boats.

8.6 Sailors using loaner boats are expected to maintain the boats as provided and are not to temporarily add or remove any equipment without the written consent of the Maintenance and Repair Officer and the owner's representative. Failure to comply may result in a penalty.

8.7 The Organizing Authority may have a limited number of assistive devices. Sailors requiring assistive devices should request one on their entry form.

8.8 Failure of the Organizing Authority to supply an Autohelm/Windlass or failure of an Autohelm/Windlass while racing will not be grounds for redress under RRS 62.1(a).

## **9. CLASS FLAGS**

9.1 The class flag for both fleets will be a white flag with the Mobility Cup logo.

## **10. RACING AREA**

10.1 The racing area will be on the Northwest Arm of Sydney Harbour, south of Northern Yacht Club. Please see Appendix A.

## **11. COURSES**

11.1 Courses will be windward-leeward with a race duration of approximately 30 to 45 minutes. Please see Appendix B.

## **12. MARKS**

12.1 Windward and leeward marks will be yellow inflatable cylinders.

12.2 Change of course marks will be red inflatable tetrahedrons.

12.3 The starting mark will be a red ball.

12.4. The finish mark will be the same as the start mark.

## **13. THE START**

13.1 Races will be started using RRS 26.

13.2 The start line will be between a pole displaying an orange flag on the committee boat on the starboard end of the start line and a red ball on the port end of the line.

13.3 A boat that does not start within 5 minutes after her starting signal will be scored Did Not Start without a hearing. This changes RRS A5.1 and A5.2.

13.4 The orange flag will be raised with a sound signal 1 minute before the 5-minute starting sequence.

## **14. CHANGE OF THE NEXT LEG OF THE COURSE**

14.1 To change the next leg of the course, the race committee will lay a new mark (or move the finishing line) and remove the original mark as soon as practicable. When in a subsequent change a new mark is replaced, it will be replaced by an original mark. Change of course will comply with RRS 33 and 33(a)(2).

## **15. THE FINISH**

15.1 The finish line will be between the mast displaying a blue flag on the RC boat and the course side of the red ball on the water.

## **16. PENALTY SYSTEM**

16.1 RRS 44.1 is changed so that the Two – Turns Penalty is replaced by the One – Turn Penalty.

## 17. TIME LIMITS AND TARGET TIMES

Time limits and target times are as follows:

Mark 1 Time limit	Target time	Time limit	Finish Window
15	30	45	15

17.1 If no boat has passed Mark 1 within the Mark 1 time limit the race will be abandoned.

17.2 Failure to meet the target time will not be grounds for redress. This changes RRS 62.1(a).

17.3 Boats failing to finish within the finish window after the first boat sails the course and finishes will be scored Did Not Finish without a hearing. This changes RRS 34, A4 and A5.

17.4 The Race Committee may award finishing points to boats which are delaying the start of the next race. This changes RRS 28.1, 35, A4 and A5.

## 18. PROTESTS AND REQUESTS FOR REDRESS

18.1 Protest forms are available at the notice board, located in the event tent. Protests and requests for redress or reopening shall be delivered to the race officer within the appropriate time limit.

18.2 : For each fleet, the protest time limit is 90 minutes after the last boat has finished the last race of the day or the race committee signals no more racing today, whichever is later. Signal Flag B will be flown on shore and removed at the expiration of protest time. The time limit will also be posted on the official notice board.

18.3 Notices will be posted no later than 30 minutes after the protest time limit to inform competitors of hearings in which they are parties or named as witnesses. Hearings will be held in the protest room, located in the Junior Sailing/SailAble building, beginning at the time posted.

18.4 Notices of protests by the race committee or protest committee will be posted to inform boats under RRS 61.1(b).

18.5 On the last scheduled day of racing a request for redress based on a protest committee decision shall be delivered no later than 30 minutes after the decision was posted. This changes RRS 62.2.

## 19. SCORING

19.1 One race in each fleet is required to be completed to constitute a series for that fleet.

19.2 When fewer than 5 races have been completed, a boat's series score will be the total of all her race scores. When 5 races or more have been completed, a boat's series score will be the total of her race scores excluding her worst score.

## **20. COMMUNICATION AND SUPPORT BOATS**

20.1 Race committee communications may be monitored on channel 72.

20.2 Except in an emergency, a boat that is racing shall not make voice or data transmissions and shall not receive voice or data transmissions not available to all boats. (DP)

20.3 Coach/Support boats must register with the Organizing Authority and will be given a flag which must be prominently displayed. (DP)

## **21. BERTHING AND HAULOUT RESTRICTIONS**

21.1 Boats shall not be hauled out during the regatta except with and according to the terms of prior written permission by the Maintenance and Repair Officer. (DP)

21.2 Boats shall be assigned a dock location by the dockmaster and shall not be moved to an alternate dock without his/her permission. (DP)

## **22. PRIZES**

22.1 The Mobility Cup will be awarded to the winner of the Gold Fleet.

22.2 The Coupe Dallaire will be awarded to the winner of the Silver Fleet.

22.3 The Sam Sullivan Trophy will be awarded to the highest finishing competitor using sip and puff technology.

22.4 The Debbie Donald Award will be presented to the highest placing female sailor.

22.5 The Darren Tucker Sportsmanship Award will be presented to a sailor selected by the Organizing Authority displaying fair play and grace, respect for the sport and respect for fellow sailors.

22.6 The Hamilton Harbour Commission Trophy (Rookie of the Year) will be awarded to a first-time participant who has the highest finish among all other qualifying rookies and is in the top 75% of his/her fleet.

22.7 Keeper prizes will be awarded to the top five finishers in each fleet.

## **23. DISCLAIMER OF LIABILITY**

23.1 Sailing is an activity that has an inherent risk of damage and injury. RRS 3 of the Rules of Sailing states: "The responsibility for a boat's decision to participate in a race or to continue racing is hers alone." Competitors and companions participate in the regatta entirely

at their own risk. The Organizing Authority will not accept any liability for material damage or personal injury, or death sustained in conjunction with, prior to, during, or after the regatta.

23.2 Sailors and volunteers are required to acknowledge an online waiver of liability as a condition of participation. Sailors or volunteers under the age of 18 must provide a waiver signed by their parent or guardian.

### **23. INSURANCE AND DAMAGE DEPOSITS**

23.1 All boats used in the regatta must have Hull and Machinery insurance and carry valid third-party liability insurance with a minimum coverage of \$2,000,000 CAD per incident or the equivalent.

23.2 At the end of the regatta, all unused funds in the fleet insurance fund will be equally divided among all registered sailors who were not found to be at fault in any accidents or incidents causing damage to the boat they were using during the course of the regatta. Competitors found to be at fault in an accident or incident will forfeit the entire damage deposit. The Mobility Cup Damage Policy can be consulted online at <https://mobilitycup.com/en-ca/racing/race-documents>.

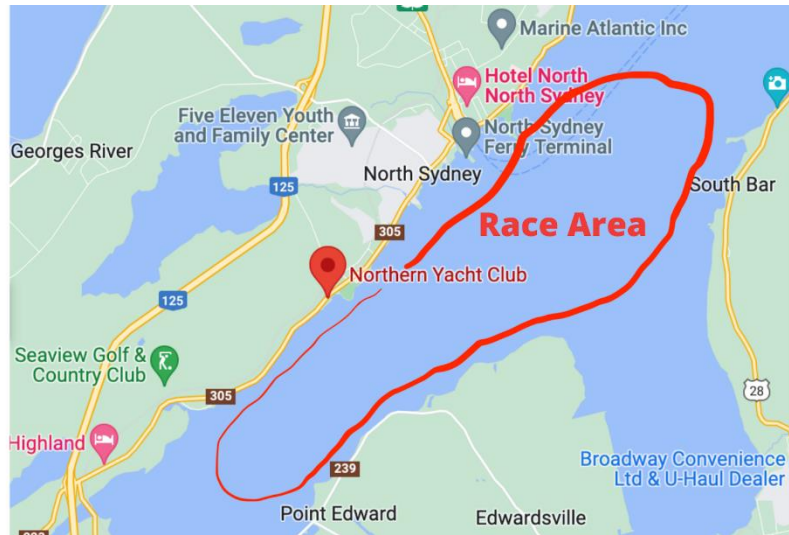
23.3 The decision of fault of damage outside the Rules of Sailing will be made by the protest committee.

### **24. SAFETY**

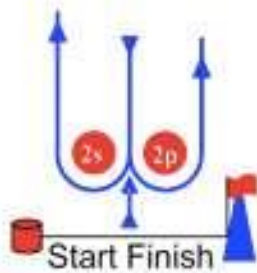
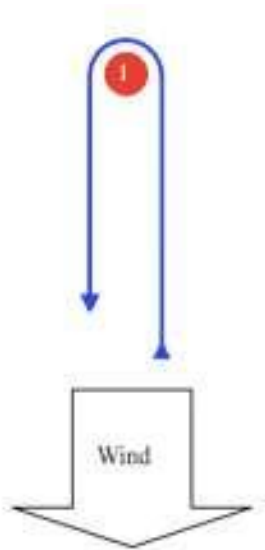
24.1 Competitors shall always wear life jackets or other adequate personal buoyancy devices while on the dock and afloat. A whistle must be attached to every competitor's life jacket unless an exemption is granted. This changes the preamble to RRS Part 4 and RRS 40.

24.2 Every boat shall have a 5-7 mm X 5m painter attached to the bow eye with the free end of the line within easy reach of the skipper.

## Appendix A: Yacht Club and Racing Area



## Appendix B The Course



Signal	Mark Rounding Order
L1	Start-1-Finish
L2	Start-1-2s/2p-1-Finish
L3	Start-1-2s/2p-1-2s/2p-1-Finish
L4	Start-1-2s/2p-1-2s/2p-1-2s/2p-1-Finish